

Medfly Phytosanitary Requirements

All Medfly host material that originates, was packed or stored in the quarantine area of Los Angeles County, CA. is prohibited for export to Mexico.

Commodities Originating in Kern County see the following:

If grown or packed in CA but outside the quarantine area (Kern County):

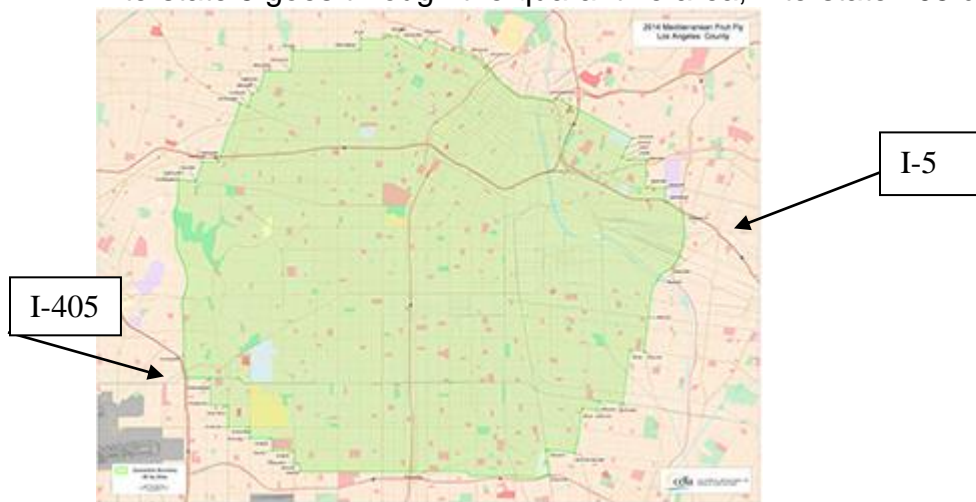
1. Federal Phytosanitary Certificate is required
2. MUST clearly specify the origin of the commodity
3. PC must have the following AD additional to any AD listed in summary:
“The Medfly host material in this shipment was grown, packed, and stored outside of the quarantine area.”

If transiting through the quarantine area of Los Angeles, containers must be sealed. Seal and Container number must be on the Federal Phytosanitary certificate in the distinguishing marks.

NOTE: If for any reason the seal is broken by an official, an affidavit indicating the reason for breaking the seal must be filed.

Before entering the quarantine area, consignments must be completely covered to prevent Medfly entry. Screen or plastic can be used. If the Material is in a container, the Ventilation ducts must be covered with 16mm or less screening. No consignments will be opened, unpacked, or unloaded in the quarantine area.

Interstate 5 goes through the quarantine area, Interstate 405 does not.



Med Fly Host List: Kiwi, Peppers, Citrus fruit, Melon, Persimmons, Tomatoes, Apple, Almonds, Apricot, Cherry, Plum, Peaches, Nectarines, Pomegranate, Pear, Grapes.

A larger list can be found on PExD: Mexico, Supporting Documents, Medfly (Ceratitis capitata) Host List

DATE – 12/12/18

COUNTRY – MEXICO

SUMMARY REFERENCE - Same

APPROVED NAME – Mexico

COMMODITY – Alfalfa Seed

BOTANICAL NAME – *Medicago sativa*

PRODUCT FORM - Seed

PHYTO FORM – Fed

IMPORT PERMIT - Yes

RESTRICTIONS - Restricted

SUMMARY INFO -

Import Permit and Federal or Phytosanitary Certificate Required.

The USDA has informed CDFA that any seed shipments to Mexico accompanied by Import Permits which require the term “of seed” to be included on the phytosanitary certificate as treatment information, **cannot have the words “of seed” in block #5**, but **may have “of seed” added to the phytosanitary certificate in block #6**.

AD Required: “The khapra beetle, *TROGODERMA GRANARIUM*, is not known to occur in the United States. The seed in this shipment is free of *CLAVIBACTER MICHIGANESIS* subsp *insidiosus*, and *DITYLENCHUS DIPSACI*. The seed in this shipment is free of quarantine weed seeds in accordance with NOM-043-FITO-1999.”

If inert substrate is used to support the plants, the material must not have been previously used and must be free from pests. If this is the case, the following AD is also required:

ADDITIONAL AD if using inert substrate:

"The inert substrate used to support the plants is being used for the first time and is free from pests."

- The freedom of pests and tolerances required by the ADs can be determined by active field inspection of the mother plants or laboratory analysis.
- Propagative materials require preventative treatment in country of origin or at point of entry into Mexico. If treated at origin, treatment must be listed in the treatment section of the PC.
- All propagative material must be free from soil and shipped in new packing material.

Inert Substrate: Organic or inorganic material that has been subjected to a quarantine treatment acting as a support for seedling and is free of pests. EX: vermiculite, agrolita, peat-moss, tezontle, washed sand, etc.

SUBSIDIARY INFO – PC must include weight in box 9. Phyto inspections must take place no more than 30 days prior to shipping. Phytos must not contain erasures, corrections, or no more than one type of handwriting. Additional Declarations only to be put on a PC when specifically required. Other requirements are considered met when the PC is issued.

COUNTRY – MEXICO

DATE – 12/15/16

APPROVED NAME – Mexico

SUMMARY REFERENCE – Same

COMMODITY – Almonds & Pistachios

BOTANICAL NAME – *Prunus dulcis (P.amygdalus), Pistachia vera*

PRODUCT FORM – Nuts

PHYTO FORM – Fed

IMPORT PERMIT – Yes

RESTRICTIONS – Restricted

SUMMARY INFO–

Nuts from California

Phytosanitary Certificate (PC) and Import Permit (IP) are required.

For Almonds the following AD is required

"The Med Fly host material in this shipment was grown, packed, and/or stored outside of the quarantine area."

All Shipments Must:

- All fruits as well as packaging must be free of leaves, plant debris, and soil.
- Will be subject to inspection and sampling at any point of entry into Mexico.
- Must meet all requirements previously established by the existing regulation
- If shipping nuts with husk call the office for further requirements.

ADDITIONAL INFORMATION FOR PHYTO:

- If treatment is required PC treatment area must be filled out
- Include the scientific name of all commodities in Block 10 of the PC.
- Name of produce and quantity declared (Box 9) include the total weight of the shipment in pounds or kilograms to avoid any rejections at the border.
- County and State indicated in the place of origin box on the phytosanitary certificate.

SUBSIDIARY INFO - PC must include weight in box 9

Phyto inspections must take place no more than 30 days prior to shipping. *If the shipment does not originate in Kern county please call the office to verify AD is correct.*

DATE – 12/12/18

COUNTRY – MEXICO

SUMMARY REFERENCE - Same

APPROVED NAME – Mexico

COMMODITY – Apricots, Peaches, Nectarines, Plums,
BOTANICAL NAME – *Prunus armeniaca*, *P. persica*, *P. persica* var. *nucipersica*, *P. domestica*

PRODUCT FORM – Fruit

PHYTO FORM – Fed

IMPORT PERMIT – No

RESTRICTIONS – Restricted

SUMMARY INFO – (From CA)--Federal Phytosanitary Certificate Required.

NOTE: See page 1 for more Medfly host information. Oriental Fruit Fly restrictions on all host material from LA and Sacramento counties.

Inspection

- County Inspector to check records for: fruit origin, field walks/ cutting records, and that there are no pest identifications pending
- County inspector will take a sample of 2 % of the load minimum 1 box from each pallet must be taken. Sample will be random taking boxes from the top three levels of the pallet. Every lot on the load should be present in the sample. A tolerance of no more than 2 % of boxes without lot number will be accepted.
- Fruit in the sampled boxes will be inspected for the tolerance of stems (apricots and interspecific apricots), leaves, damage or signs of external pest feeding, and 5% of the fruit will be cut to check internal pest feeding.
- A quarantine pest detection or more than 5% of fruit inspected is found to contain non-quarantine pests, the shipment will be rejected and no re-certification will be allowed.
- Reconditioning will be allowed only for plant debris, stems (apricots and interspecific apricots), leaves and soil.
- Rejected shipments must be stamped by the packinghouse and under county inspector supervision with the "Not for Mexico" stamp on each pallet tag, in order to avoid them from being resubmitted for inspection.

AD Required (Systems approach option):

“Peaches and/or nectarines, plums, interspecific plums or apricots in this shipment were treated and inspected under the procedures of the work plan agreed between DGSV and APHIS and were found free of live pests. The product has been inspected and found free of any biological instars of *Epiphyas postvittana*. The product has been inspected and found free of any life cycles of *Lobesia botrana*. The Oriental fruit fly host material in this shipment was grown, packed, and/or stored outside of the quarantine area. Based on inspection, this shipment is free of *Maconellicoccus hirsutus*. (Pink Hibiscus Mealybug). The Medfly host material in this shipment was grown, packed, and/or stored outside of the quarantine area.”

SEE NEXT PAGE

Additional Phyto Information:

- Phytosanitary Certificate shall be issued within 24 hours after the inspection is completed, for weekday inspections or within 48 hours for Saturday's inspections.
- Place of Origin box must state the Name of packing facility state and county of origin (as it appears on Mexico's list)
- Products must be sent in closed containers that have been sealed at origin.
- Means of Conveyance section (box 14) must list the Seal number(s)
- The container, ventilation ducts must be covered with 16 mm or less screening.
- Vehicles must not be opened, unpacked or unloaded in the quarantine area.
- Distinguishing Marks section: must contain the lot numbers.
- If treatment is required PC treatment area must be filled out
- Include the scientific name of all commodities in Block 10 of the PC.
- Name of produce and quantity declared (Box 9) include the total weight of the shipment in pounds or kilograms to avoid any rejections at the border.

REFER TO THE CURRENT WORK PLAN FOR CERTIFICATION REQUIREMENTS and list of quarantine pests. Contact the Bakersfield office for details concerning this work plan. Please note that this work plan may change from year to year.

This information applies only to fruit sourced, packed and inspected using the Systems Approach for Mexico.

If Originating or packed outside quarantine areas of Anaheim, Orange County and Cerritos and Artesia, Los Angeles County in California.

- Products must be sent in closed containers that have been sealed at origin.
- Before entering into an OFF quarantine area, the consignment must be completely covered to prevent fruit fly entry. (for example: with a screen or covered with plastic)
- The container, ventilation ducts must be covered with 16 mm or less screening. Vehicles must not be opened, unpacked or unloaded in the quarantine area.
- Consignments transiting through the quarantine areas for OFF must be sealed, with the seal and container number listed on the PC

SUBSIDIARY INFO – PC must include weight in box 9

Phyto inspections must take place no more than 30 days prior to shipping. Phytos must not contain erasures, corrections, or no more than one type of handwriting. Botanical name must be written on the phyto in the appropriate area. *If the shipment does not originate in Kern county please call the office to verify AD is correct.*

COUNTRY – MEXICO

DATE – 06/27/14

APPROVED NAME –Mexico

SUMMARY REFERENCE – Same

COMMODITY – Carrots

BOTANICAL NAME –*Daucus carota*

PRODUCT FORM - Vegetable

PHYTO FORM – Fed

IMPORT PERMIT – No

RESTRICTIONS – Restricted

SUMMARY INFO - Federal Phytosanitary Certificate Required. Carrots must be free from soil.

AD Required:

"Based on inspection, this shipment is free of *Maconellicoccus hirsutus* (Pink Hibiscus Mealybug.) The product has been inspected and found free of any biological instars of *Epiphyas postvittana*."

ADDITIONAL INFORMATION FOR PHYTO:

- If treatment is required PC treatment area must be filled out
- Include the scientific name of all commodities in Block 10 of the PC.
- Name of produce and quantity declared (Box 9) include the total weight of the shipment in pounds or kilograms to avoid any rejections at the border
- The **County and State must** be indicated in the place of origin box on the phytosanitary certificate.

Additional Information Epiphyas postvittana (LBAM):

If Originating or packed within Alameda, Contra Costa, Los Angeles, Marin, Monterey, San Benito, San Diego, San Francisco, San Joaquin, San Luis Obispo, San Mateo, Santa Barbara, Santa Clara, Santa Cruz, Solano, Sonoma, and Yolo counties, California and Hawaii

- Must have an *E. postvittana* monitoring system showing negative results.
- Must have an integrated pest management (IPM) program, which includes *E. postvittana*
- Product Must be sent in closed containers that have been sealed at origin

All shipments:

- All fruits as well as packaging **must** be free of leaves, plant debris, and soil.
- Will be subject to inspection and sampling at any point of entry into Mexico.
- **NOTE:** Shipments certified in Non-regulated counties must be sent in closed containers that were sealed at origin if transiting a LBAM regulated area before reaching the Mexican border.

SUBSIDIARY INFO –Phyto inspections must take place no more than 30 days prior to shipping. Phytos must not contain erasures, corrections, or no more than one type of handwriting. Botanical name must be written on the phyto in the appropriate area.

DATE – 7/11/18

COUNTRY - MEXICO

SUMMARY REFERENCE - Same

APPROVED NAME – Mexico

COMMODITY – Bell peppers, Melons, Pomegranates

BOTANICAL NAME – *Capsicum anuum* (bell peppers), *Cucumis melo* (melons), *Punica granatum* (pomegranates),

PRODUCT FORM – Fruit, Vegetables

PHYTO FORM – Fed

IMPORT PERMIT – No

RESTRICTIONS – Restricted

SUMMARY INFO – All products must be free from leaves and residual debris. Include the seal number in the distinguishing marks section of the phyto. AD's apply to fruit originating in Kern County, if fruit is not from Kern call the office for requirements.

Bell peppers- Federal Phytosanitary Certificate

AD Required: “This shipment was not produced in areas regulated (quarantine) for fruit flies of quarantine importance. Based on inspection, this shipment is free of *Maconellicoccus hirsutus*. (Pink Hibiscus Mealybug). The product was inspected and found free of any biologic instars of EPIPHYAS POSTVITTANA. The Med Fly host material in this shipment was grown, packed, and/or stored outside of the quarantine area. The Oriental fruit fly host material in this shipment was grown, packed, and/or stored outside of the quarantine area.”

Melons- Federal Phytosanitary Certificate Required.

AD Required: “This shipment was not produced in areas regulated (quarantine) for fruit flies of quarantine importance. Based on inspection, this shipment is free of *Maconellicoccus hirsutus*. (Pink Hibiscus Mealybug). The Med Fly host material in this shipment was grown, packed, and/or stored outside of the quarantine area. The Oriental fruit fly host material in this shipment was grown, packed, and/or stored outside of the quarantine area.”

Pomegranates- Federal Phytosanitary Certificate Required.

AD Required: “This shipment was not produced in areas regulated (quarantine) for fruit flies of quarantine importance. The product has been inspected and found free of any life cycles of Lobesia botrana. Based on inspection, this shipment is free of *Maconellicoccus hirsutus*. (Pink Hibiscus Mealybug). The Oriental Fruit Fly host material in this shipment was grown, packed and /or stored outside of the quarantine area. The Med Fly host material in this shipment was grown, packed, and/or stored outside of the quarantine area. The *Bactrocera latifrons* host material in this shipment was grown, packed, and/or stored outside of the quarantine area.”

SEE NEXT PAGE

Additional phyto Information:

- The County and State must be indicated in the place of origin box on the phytosanitary certificate.
- If a treatment is required, PC treatment area must be filled out
- Include the scientific name of all commodities in Block 10 of the PC.
- Name of produce and quantity declared (Box 9) include the total weight of the shipment in pounds or kilograms to avoid any rejections at the border.
- If Originating or packed outside Anaheim/Los Angeles county in California.
- Products must be sent in closed containers that have been sealed at origin.
- Before entering into an OFF quarantine area, the consignment must be completely covered to prevent fruit fly entry. (for example: with a screen or covered with plastic)
- The container, ventilation ducts must be covered with 16 mm or less screening. Vehicles must not be opened, unpacked or unloaded in the quarantine area.
- Consignments transiting through the quarantine areas for OFF must be sealed, with the seal and container number listed on the PC

SUBSIDIARY INFO – Phyto inspections must take place no more than 30 days prior to shipping. Phytos must not contain erasures, corrections, or no more than one type of handwriting. Botanical name must be written on the phyto in the appropriate area. *If the shipment does not originate in Kern County please call the office to verify AD is correct.*

COUNTRY – MEXICO

DATE – 2/15/18

APPROVED NAME – Mexico

SUMMARY REFERENCE - Same

COMMODITY – Citrus Fruit

BOTANICAL NAME – *Citrus spp.*

PRODUCT FORM – Fruit

PHYTO FORM - Fed

IMPORT PERMIT - No

RESTRICTIONS - Restricted

SUMMARY INFO -Federal Phytosanitary Certificate required.

Phyto Information:

- The County and State must be indicated in the place of origin box on the phytosanitary certificate.
- All fruits as well as packaging must be free of leaves, plant debris, and soil.
- Must be packed in new cartons not previously used for any purpose. Shipments of citrus fruit must enter through the following authorized ports of entry: Tijuana, B.C.; Nuevo Laredo and Reynosa, Tamps.; and Manzanillo, Colima.
- If Originating or packed **Within** Alameda, Contra Costa, Los Angeles, Marin, Monterey, San Benito, San Diego, San Francisco, San Joaquin, San Luis Obispo, San Mateo, Santa Clara, Santa Cruz, Solano, Sonoma, and Yolo counties, California
 1. Must have an *E. postvittana* monitoring system showing negative results.
 2. Must have an integrated pest management (IPM) program, which includes *E. postvittana*
 3. Products must be sent in closed containers that have been sealed at origin.
- If Originating or packed **outside** Anaheim, Orange county and North Hollywood / Burbank, in Los Angeles county in California.
 1. Products must be sent in closed containers that have been sealed at origin
 2. Before entering into a quarantine area, the consignment must be completely covered to prevent fruit fly entry. (for example: with a screen or covered with plastic)
 3. The container, ventilation ducts must be covered with 16 mm or less screening. Vehicles must not be opened, unpacked or unloaded in the quarantine area.
 4. Consignments transiting through the quarantine areas must be sealed, with the seal and container number listed on the PC

AD Required: "This shipment was not produced in areas regulated (quarantine) for fruit flies of quarantine importance. The product has been inspected and found free of any biological instars of *Epiphyas postvittana*. Based on inspection, this shipment is free of *Maconellicoccus hirsutus* (Pink Hibiscus Mealybug). The Med Fly host material in this shipment was grown, packed, and/or stored outside of the quarantine area. The Oriental fruit fly host material in this shipment was grown, packed, and/or stored outside of the quarantine area."

NOTE: Clementines should be listed as **mandarins** in the commodity box on the phyto to avoid delays at the border.

SUBSIDIARY INFO - PC must include weight in box 9

Phyto inspections must take place no more than 30 days prior to shipping. Phytos must not contain erasures, corrections, or no more than one type of handwriting.

DATE – 07/10/13

COUNTRY – MEXICO

SUMMARY REFERENCE - Same

APPROVED NAME – Mexico

COMMODITY – Citrus Plants, Cuttings, Budwood, & Branches

BOTANICAL NAME – *Citrus spp*

PRODUCT FORM – Plants, Cuttings,
Budwood, Branches

PHYTO FORM - Fed

IMPORT PERMIT – No – Orange
Yes – All other citrus

RESTRICTIONS – Restricted – Orange
Prohibited – All other citrus and all
types of citrus branches

SENASICA cancelled the previous import permit procedure for importing plant and plant products into Mexico and developed a new one. Instead of the previous procedure they have developed a data base in the SENASICA web page (www.senasica.gob.mx)

SUMMARY INFO – Federal Phyto required. Propagative materials require preventative treatment in country of origin or at point of entry into Mexico. If treated at origin, treatment must be listed in the treatment section of the PC. All propagative material must be free from soil and shipped in new packing material (Soil, growing media, and packing material). Verification at origin required. This means that Mexico requires the commodity be inspected at origin by a Mexican inspector. The importer must request this service from the Mexican Plant Health office in Mexico City.

ORANGE plants, cutting, budwood, seedlings & branches (*Citrus sinensis*) – Federal Phyto required.

AD Required: “*Aleurocanthus spiniferus* and *Anoplophora chinensis* are not known to occur in the United States. This shipment is free of *Citrus blight disease*, *Citrus exocortis viroid*, *Citrus leprosis rhabdovirus*, *Citrus psorosis virus*, *Citrus ringstop virus*, *Citrus tatter leaf capillovirus*, *Citrus tristeza closterovirus*, *Citrus vein enation virus*, *Homalodisca coagulate*, *Lopholeucapis japonica*, *Orchamoplatus mammaeferus*, *Parabemisia myricae*, *Parlatoria ziziphi*, *Toxoptera citricida* and *Xanthomonas axonopodis pv. citri*. The product has been inspected and found free of any biologic instars of EPIPHYAS POSTVITTANA. Based on inspection, this shipment is free of *Maconellicoccus hirsutus* (Pink Hibiscus Mealybug).”

If inert substrate is used the following AD is also required:

“The inert substrate used to support the plants is being used for the first and is free from pest.”

Lemon, Grapefruit, Mandarin cuttings/buds/branches

Prohibited Products: DO NOT CERTIFY UNLESS AN IMPORT PERMIT IS PRESENTED. Trees must be bare root and free of leaves.

Lemon, Grapefruit, Mandarin Plants: Federal Phytosanitary Certificate is required

AD Required: “The product has been inspected and found free of any biologic instars of Epiphyas postvittana. Based on inspection, this shipment is free of *Maconellicoccus hirsutus* (Pink Hibiscus Mealybug).”

ADDITIONAL INFORMATION FOR PHYTO:

- If treatment is required PC treatment area must be filled out
- Include the scientific name of all commodities in Block 10 of the PC.
- Name of produce and quantity declared (Box 9) include the total weight of the shipment in pounds or kilograms to avoid any rejections at the border.

SUBSIDIARY INFO -Phyto inspections must take place no more than 30 days prior to shipping. Phytos must not contain erasures, corrections, or no more than one type of handwriting. Botanical name must be written on the phyto in the appropriate area. *If the shipment does not originate in Kern county please call the office to verify AD is correct.*

DATE – 10/17/17

COUNTRY – MEXICO

SUMMARY REFERENCE - Same

APPROVED NAME – Mexico

COMMODITY – Citrus Seed

BOTANICAL NAME – *Citrus spp.*

PRODUCT FORM – Seed

PHYTO FORM - Fed

IMPORT PERMIT - Yes

RESTRICTIONS - Restricted

SENASICA cancelled the previous import permit procedure for importing plant and plant products into Mexico and developed a new one. Instead of the previous procedure they have developed a data base in the SENASICA web page (www.senasica.gob.mx)

SUMMARY INFO - Import Permit and Federal Phytosanitary Certificate Required. The USDA has informed CDFA that any seed shipments to Mexico accompanied by Import Permits which require the term “of seed” to be included on the phytosanitary certificate as treatment information, **cannot have the words “of seed” in block #5**, but **may have “of seed” added to the phytosanitary certificate in block #6**.

AD Required: “The Khapra beetle, TROGODERMA GRANARIUM, is not known to occur in the United States.”

Import permits may require treatments.

NOTE: If an Import Permit is presented, Mexico allows alternative seed treatments, other than the ones indicated in the import permit, as long as the chemical products used for the treatment are officially authorized to be used in the country of origin for the product in question (i.e., applied at the labeled rate in the U.S.). The type of treatment and doses applied must be documented in the appropriate section of the Phyto certificate.

ADDITIONAL INFORMATION FOR PHYTO:

- If treatment is required PC treatment area must be filled out
- Include the scientific name of all commodities in Block 10 of the PC.
- Name of produce and quantity declared (Box 9) include the total weight of the shipment in pounds or kilograms to avoid any rejections at the border.

SUBSIDIARY INFO -

Phyto inspections must take place no more than 30 days prior to shipping. Phytos must not contain erasures, corrections, or no more than one type of handwriting. Botanical name must be written on the phyto in the appropriate area. *If the shipment does not originate in Kern county please call the office to verify AD is correct.*

COUNTRY – MEXICO

DATE – 07/10/13

APPROVED NAME – Mexico

SUMMARY REFERENCE – Same

COMMODITY – Cotton

BOTANICAL NAME – *Gossypium hirsutum*.

PRODUCT FORM – Lint/Fiber

PHYTO FORM – Fed

IMPORT PERMIT – Yes

RESTRICTIONS – Restricted

SENASICA cancelled the previous import permit procedure for importing plant and plant products into Mexico and developed a new one. Instead of the previous procedure they have developed a data base in the SENASICA web page (www.senasica.gob.mx)

SUMMARY INFO –

Phytosanitary Certificate (PC) and Import Permit (IP) are required.

AD Required:

“The fiber removed from the cottonseed is without cottonseed and each bale was compressed and packaged to a density of 360 kg/m³ or 22.47 lb/ft³.”

Additional Information

- Wrappers and packing material for cotton and cotton products must not have been used previously with infested agricultural products.
- All bales and packages of cotton must bear numbered tags.
- Articles may be fumigated at the port of export although this is not necessary.
- If shipments are fumigated used methyl bromide at a dosage of 82 grams per cubic meter (5.12 pounds per 1,000 cubic feet) for 72 hours and record the treatment on the Phytosanitary Certificate.

- The state of origin must be stated on the PC.
- PC must include weight in box 9

SUBSIDIARY INFO – Phyto inspections must take place no more than 30 days prior to shipping. Phytos must not contain erasures, corrections, or no more than one type of handwriting. Botanical name must be written on the phyto in the appropriate area. This applies to commodities originating in Kern County.

DATE – 10/17/17

COUNTRY – MEXICO

SUMMARY REFERENCE – Same

APPROVED NAME - Mexico

COMMODITY – Cotton Seed

BOTANICAL NAME – *Gossypium spp.*

PRODUCT FORM – Seed

PHYTO FORM - Fed

IMPORT PERMIT - Yes

RESTRICTIONS - Prohibited

SENASICA cancelled the previous import permit procedure for importing plant and plant products into Mexico and developed a new one. Instead of the previous procedure they have developed a data base in the SENASICA web page (www.senasica.gob.mx)

The USDA has informed CDFA that any seed shipments to Mexico accompanied by Import Permits which require the term “of seed” to be included on the phytosanitary certificate as treatment information, **cannot have the words “of seed” in block #5**, but **may have “of seed” added to the phytosanitary certificate in block #6**.

SUMMARY INFO – Seed for planting

Import Permit and Federal Phytosanitary Certificate required.

DONOT CERTIFY UNLESS AN IMPORT PERMIT IS PRESENTED.

NOTE to Exporter: If seed is for industrial use and not for planting other requirements may apply. Contact our main office for further requirements.

ADDITIONAL INFORMATION FOR PHYTO:

- If treatment is required PC treatment area must be filled out
- Include the scientific name of all commodities in Block 10 of the PC.
- Name of produce and quantity declared (Box 9) include the total weight of the shipment in pounds or kilograms to avoid any rejections at the border.

SUBSIDIARY INFO -

Phyto inspections must take place no more than 30 days prior to shipping. Phytos must not contain erasures, corrections, or no more than one type of handwriting. Botanical name must be written on the phyto in the appropriate area. *If the shipment does not originate in Kern County please call the office to verify AD is correct.*

COUNTRY – MEXICO

DATE – 9/07/12

APPROVED NAME – Mexico

SUMMARY REFERENCE – Same

COMMODITY – Garlic

BOTANICAL NAME – *Allium sativum*

PRODUCT FORM – Vegetables, Bulbs for Planting, & Seed PHYTO FORM – Fed

IMPORT PERMIT – Yes – Seed

RESTRICTIONS – Restricted

No – Vegetable, Bulbs for Planting

SUMMARY INFO –

VEGETABLES – Federal Phytosanitary Certificate required.

AD Required: “This shipment is free from *Ditylenchus dipsaci* and *Sclerotium cepivorum*.”

Upon arrival in Mexico, the shipment MUST be fumigated with aluminum phosphine at the rate of 3 tablets per ton for 12 hours.

BULBS FOR PLANTING – Federal Phytosanitary Certificate required.

AD Required: “This shipment is free of *Acrolepiopsis assectella*, *Aphelenchoides fragariae*, *Botryotinia porri*, *Botryotinia squamosa*, *Delia antiqua*, *Delia platura*, *Ditylenchus destructor*, *Ditylenchus dipsaci*, *Liriomyza trifolii*, *Onion yellow dwarf potyvirus*, and *Puccinia porri*.”

NOTE: If inert substrate is used to support the plants, the material must not have been previously used and must be free from pests. If this is the case, the following AD is also required:

“The inert substrate used to support the plants is being used for the first time and is free from pests.”

GARLIC SEED – Import Permit and Federal Phytosanitary Certificate required.

AD Required: “The Khapra beetle, TROGODERMA GRANARIUM, is not known to occur in the United States.”

Note: Propagative materials require preventative treatment in country of origin or at point of entry into Mexico. If treated at origin, then the details must be on the phyto. All propagative material must be free from soil & shipped in new packing materials.

ADDITIONAL INFORMATION FOR PHYTO:

- If treatment is required PC treatment area must be filled out
- Include the scientific name of all commodities in Block 10 of the PC.
- Name of produce and quantity declared (Box 9) include the total weight of the shipment in pounds or kilograms to avoid any rejections at the border.

SUBSIDIARY INFO -

Phyto inspections must take place no more than 30 days prior to shipping. Phytos must not contain erasures, corrections, or no more than one type of handwriting. Botanical name must be written on the phyto in the appropriate area. *If the shipment does not originate in Kern county please call the office to verify AD is correct* SENASICA cancelled the previous import permit procedure for importing plant and plant products into Mexico and developed a new one. Instead of the previous procedure they have developed a data base in the SENASICA web page (www.senasica.gob.mx)

DATE – 10/9/17

COUNTRY – MEXICO

SUMMARY REFERENCE – Same

APPROVED NAME – Mexico

COMMODITY – Grapes

BOTANICAL NAME – *Vitis vinifera*

PRODUCT FORM – Fruit

PHYTO FORM – Fed

IMPORT PERMIT – No

RESTRICTIONS – Restricted

Mexico has prohibited Grapes from LA county and Solano County only.

SUMMARY INFO –Grapes originating in Kern County. Federal Phytosanitary Certificate Required. **Note:** Raisins are unrestricted.

AD Required: "The grapes in this shipment were produced in areas that are not regulated (quarantined) for fruit flies of quarantine importance. The product was inspected and found free of any biologic instars of *Epiphyas postvittana*. The product has been inspected and found free of any life cycles of *Lobesia botrana*. The shipment is free of leaves. The Oriental Fruit Fly host material in this shipment was grown, packed and /or stored outside of the quarantine area. Based on inspection, this shipment is free of *Maconellicoccus hirsutus* (Pink Hibiscus Mealybug). The Med Fly host material in this shipment was grown, packed, and/or stored outside of the quarantine area."

Additional Phyto Information:

- Shipments must move directly from the place of packing to Mexico in original, closed cases.
- No repackaging is allowed.
- The County and State must be indicated in the place of origin box on the phytosanitary certificate.
- PC must include weight in box 9
- All fruits as well as packaging must be free of leaves, vines, plant debris, and soil.
- Products must be sent in closed containers that have been sealed at origin.
- Before entering into an OFF quarantine area, the consignment must be completely covered to prevent fruit fly entry. (for example: with a screen or covered with plastic)
- The container, ventilation ducts must be covered with 16 mm or less screening. Vehicles must not be opened, unpacked or unloaded in the quarantine area.
- Consignments transiting through the quarantine areas for OFF must be sealed, with the seal and container number listed on the PC

SUBSIDIARY INFO -

Phyto inspections must take place no more than 30 days prior to shipping. Botanical name must be written on the phyto in the appropriate area. *If the shipment does not originate in Kern County please call the office to verify if AD is correct.*

COUNTRY – MEXICO

DATE – 7/10/13

APPROVED NAME – Mexico

SUMMARY REFERENCE – Same

COMMODITY – Grapevines Cuttings

BOTANICAL NAME – *Vitis vinifera*

PRODUCT FORM – Plants, cuttings

PHYTO FORM – Fed

IMPORT PERMIT – Vine- NO

RESTRICTIONS – Vine-Restricted

SUMMARY INFO – Propagative materials require preventative treatment in country of origin or at point of entry into Mexico. If treated at origin, treatment must be listed in the treatment section of the PC. All propagative material must be free from soil and shipped in new packing material

VINE -- (without leaves - cutting, root cutting, rooted cutting)
Phytosanitary Certificate (PC) is required.

AD Required:

Grapevine flavescence dorée phytoplasma and *Scirtothrips dorsalis* are not known to occur in the United States. This shipment is free of Blueberry leaf mottle nepovirus, Grapevine corky bark disease, *Homalodisca coagulata*, Peach rosette mosaic nepovirus, *Pseudococcus comstocki*, Strawberry latent ringspot nepovirus, Tomato ringspot nepovirus, and *Xylella fastidiosa*. The product has been inspected and found free of any life cycles of *Lobesia botrana*. The product has been inspected and found free of any biological instars of *Epiphyas postvittana*. Based on inspection, this shipment is free of *Maconellicoccus hirsutus* (Pink Hibiscus Mealybug). The shipment is coming from a company approved by DGSV.

NOTE: If inert substrate is used to support the plants, the material must not have been previously used and must be free from pests. If this is the case, the following AD is also required:

"The inert substrate used to support the plants is being used for the first time and is free from pests."

ADDITIONAL INFORMATION FOR PHYTO:

- If treatment is required PC treatment area must be filled out
- Include the scientific name of all commodities in Block 10 of the PC.
- Name of produce and quantity declared (Box 9) include the total weight of the shipment in pounds or kilograms to avoid any rejections at the border.

SUBSIDIARY INFO -Phyto inspections must take place no more than 30 days prior to shipping. If the shipment does not originate in Kern County please call the office to verify AD is correct. **SENASICA cancelled the previous import permit procedure for importing plant and plant products into Mexico and developed a new one. Instead of the previous procedure they have developed a data base in the SENASICA web page (www.senasica.gob.mx)**

DATE – 12/12/18

COUNTRY – MEXICO

SUMMARY REFERENCE – Same

APPROVED NAME – Mexico

COMMODITY – Tomatoes

BOTANICAL NAME – *Lycopersicon esculentum* (=L. *lycopersicum*)

PRODUCT FORM – Fruit

PHYTO FORM – Fed

IMPORT PERMIT – No

RESTRICTIONS – Restricted

SUMMARY INFO – Federal Phytosanitary Certificate Required.

AD Required:

“The product has been inspected and found free of any biological instars of *Epiphyas postvittana*. Based on inspection, this shipment is free of *Maconellicoccus hirsutus* (Pink Hibiscus Mealybug). This shipment was not produced in areas regulated (quarantine) for fruit flies of quarantine importance. The Oriental fruit fly host material in this shipment was grown, packed, and/or stored outside of the quarantine area”

Additional Phyto Information:

- The County and State must be indicated in the place of origin box on the phytosanitary certificate.
- If treatment is required PC treatment area must be filled out
- Include the scientific name of all commodities in Block 10 of the PC.
- Name of produce and quantity declared (Box 9) include the total weight of the shipment in pounds or kilograms to avoid any rejections at the border.

SUBSIDIARY INFO -

Phyto inspections must take place no more than 30 days prior to shipping. *If the shipment does not originate in Kern county please call the office to verify AD is correct.*

DATE – 10/17/17

COUNTRY – MEXICO

SUMMARY REFERENCE - Same

APPROVED NAME – Mexico

COMMODITY – Onions and Onion Seed

BOTANICAL NAME – *Allium cepa*

PRODUCT FORM – Vegetables, Seed

PHYTO FORM - Fed

IMPORT PERMIT – No

RESTRICTIONS – Restricted

SUMMARY INFO –

VEGETABLES – Federal Phytosanitary Certificate Required. The County and State of origin MUST be on the Phytosanitary Certificate.

AD Required: “The shipment is free from DITYLENCHUS DIPSACI.”

SEED –Federal Phytosanitary Certificate required. Mexican Plant Quarantine Officials require one of the following treatments at point of origin or point of entry (Methyl Bromide is an option: call the office for concentration, temperature, and duration):

Fumigation - Aluminum phosphide			
Concentration	Temperature	Duration	Comments
1 - 3 g/m3	12 -15 C	5 Days	Tablets
1 - 3 g/m3	12 - 15 C	4 Days	Pellets
1 - 3 g/m3	20 + C	2 Days	Pellets

AD Required: “The khapra beetle, *TROGODERMA GRANARIUM*, is not known to occur in the United States.”

ADDITIONAL INFORMATION FOR PHYTO:

- treatment area must be filled out on the PC.
- cannot have the words “of seed” in block #5, but may have “of seed” added to the phytosanitary certificate in block #6.
- Include the scientific name of all commodities in Block 10 of the PC.
- Name of produce and quantity declared (Box 9) include the total weight of the shipment in pounds or kilograms to avoid any rejections at the border.

SUBSIDIARY INFO - **SENASICA cancelled the previous import permit procedure for importing plant and plant products into Mexico and developed a new one. Instead of the previous procedure they have developed a data base in the SENASICA web page (www.senasica.gob.mx)**

Phyto inspections must take place no more than 30 days prior to shipping. Phytos must not contain erasures, corrections, or no more than one type of handwriting. Botanical name must be written on the phyto in the appropriate area. *If the shipment does not originate in Kern county please call the office to verify AD is correct.*

COUNTRY – MEXICO

DATE – 2/15/18

APPROVED NAME – Mexico

SUMMARY REFERENCE – Same

COMMODITY – Pears

BOTANICAL NAME – *Pyrus communis*

PRODUCT FORM – Fruit

PHYTO FORM – Fed

IMPORT PERMIT – No

RESTRICTIONS – Restricted

SUMMARY INFO –FROM CA

Federal Phytosanitary Certificate required. Phyto must be issued at the place of packing. In addition to the standard 2 percent inspection required by APHIS, of that 2 % 2 fruit per box plus any suspect fruit must be cut for pests/larvae. The shipment must be free of leaves and debris. A 2 leaf per box tolerance is allowed. The fruit must be packed in new containers which are marked with a lot number and addressed so that the grower and/or packer can be identified.

If the Light Brown Apple Moth (*Epiphyas postvittana*), oriental fruit moth (*C. molesta*) or plum curculio (*C. nenuphar*) are found, refuse to certify.

AD Required:

"The pears in this shipment are free of *Cydia molesta* and *Onotrachelus nenuphar* and were produced in the States of Oregon, Washington, or California. This shipment was not produced in areas regulated (quarantined) for fruit flies of quarantine importance. The product was inspected and found free of any biologic instars of *Epiphyas postvittana*. Based on inspection, this shipment is free of *Maconellicoccus hirsutus* (Pink Hibiscus Mealybug). The Med Fly host material in this shipment was grown, packed, and/or stored outside of the quarantine area. The Oriental fruit fly host material in this shipment was grown, packed, and/or stored outside of the quarantine area."

Additional Phyto Information:

- The County and State must be indicated in the place of origin box on the phytosanitary certificate.
- Include the scientific name of all commodities in Block 10 of the PC.
- Name of produce and quantity declared (Box 9) include the total weight of the shipment in pounds or kilograms to avoid any rejections at the border.

SUBSIDIARY INFO –

Phyto inspections must take place no more than 30 days prior to shipping. *If the shipment does not originate in Kern county please call the office to verify AD is correct.*

COUNTRY– MEXICO

DATE – 2/15/18

SUMMARY REFERENCE - Same

APPROVED NAME – Mexico

COMMODITY – Persimmons

BOTANICAL NAME –*Diospyros kaki*

PRODUCT FORM – Fruit

PHYTO FORM – Fed

IMPORT PERMIT – No

RESTRICTIONS – Restricted

SUMMARY INFO –

Federal Phytosanitary Certificate Required. Must be free from leaves and residual debris

NOTE: Certification must be based on the official inspection of a 2% sample from the shipment, with random selection of boxes throughout the shipment; for example, one box per pallet. In addition, of the 2% sample, 5% of the fruits in each box must be cut and examined for pest detection, especially AMYELOIS TRANSITELLA (Navel Orange Worm) and ARGYROTAENIA spp (Orange Tortrix)

AD Required: “This shipment was not produced in areas regulated (quarantine) for fruit flies of quarantine importance. This shipment is free of *Amyelois transitella* and *Argyrotaenia* spp. Based on inspection, this shipment is free of *Maconellicoccus hirsutus* (Pink Hibiscus Mealybug). The product has been inspected and found free of any biologic instars of *Epiphyas postvittana*. The product has been inspected and found free of any life cycles of *Lobesia botrana*. The Med Fly host material in this shipment was grown, packed, and/or stored outside of the quarantine area. The Oriental fruit fly host material in this shipment was grown, packed, and/or stored outside of the quarantine area.”

Additional Phyto Information:

- The County and State must be indicated in the place of origin box on the phytosanitary certificate.
- If sending in a sealed container it is recommended to include seal number on PC in the distinguishing marks box.
- If treatment is required PC treatment area must be filled out
- Include the scientific name of all commodities in Block 10 of the PC.
- Name of produce and quantity declared (Box 9) include the total weight of the shipment in pounds or kilograms to avoid any rejections at the border.

SUBSIDIARY INFO – Phyto inspections must take place no more than 30 days prior to shipping. *If the shipment does not originate in Kern County please call the office to verify AD is correct.*

COUNTRY – MEXICO

DATE – 05/17/17

APPROVED NAME – Mexico

SUMMARY REFERENCE – Same

COMMODITY – Potatoes

BOTANICAL NAME – *Solanum tuberosum*

PRODUCT FORM – Vegetables

PHYTO FORM – Fed

IMPORT PERMIT – Yes

RESTRICTIONS – Prohibited

SUMMARY INFO – Import Permit and Federal Phytosanitary Certificate required. **DO NOT CERTIFY UNLESS AN IMPORT PERMIT IS PRESENTED.** Importation of potatoes into Mexico is limited to the 26-kilometer border zone.

Shipping/Eligibility Requirements

- Produced from certified seed
- Packing house approved and registered with APHIS
- Shipment washed and free from soil
- Treated with sprout inhibitor/ record provided to certifying official
- Inspected and certified
- Packages labeled with State Code & Shed No.
Trace back to USA state of origin and packing facility
- Shipment sealed at point of inspection and to remained sealed until exported
- Provide certifying official documentation demonstrating treatment of each required sprout inhibitor application

Phytosanitary Inspection

- 1% of packages in shipment for external symptoms of nematodes
- 5 potatoes randomly selected from each package will be cut and examined for internal symptoms
- Potatoes do not need to be peeled
- 2 letter state code and Shed No. on packages (see ACO note)
- Detection of regulated pests, sprouts, or soil will result in the rejection of the shipment for export to Mexico

AD REQUIRED:

“Import permit number _____ was presented.”

“This shipment is not coming from a *Globodera pallida* regulated area in the State of Idaho, it has been produced from certified seed, treated with a sprout inhibitor, inspected and found free of *Meloidogyne chitwoodi*, *Meloidogyne javanica*, *Globodera rostochiensis*, *Globodera pallid*, *Potato virus Y, n strain*, *Potato virus Y, ntn strain*, and *Mop top virus*. The shipment has been inspected and found free from *Clavibacter michiganensis subsp. Sepedonicus*.”

SEE NEXT PAGE

Required on Phytosanitary Certificate:

- Import permit Number
- Additional declaration with IP number
- Name of Produce and Quantity Declared (box 9): Total weight of shipment
- Distinguishing Marks (box 12): 2 letter state code with Shed No. *before* any other information in this box.
- Distinguishing Marks (box 12): Seal number should be stated *after* the state/shed code.

ACO NOTE:

- DO NOT include lot number in distinguishing marks (box 12) of phyto
- If shipment is presented without 2 letter state code, do not refuse to certify; inform exporter of requirement
- Shed No. MUST be on phyto as well as packages for trace back
- Weight example: 10 bags, 200 pounds (vegetable). Weight should be determined by commodity, not packaging.

Shippers' responsibility

- For each phyto, shippers **must provide written declaration** to certifying officials stating that the potatoes in the shipment (for that particular lot #) were produced from certified seed potatoes.
- Shippers must have a unique number for each packing shed which will allow shipments to be traced back to the packing shed and therefore to the grower, as necessary. This number must be shown on all shipping units (bag or box) and will be shown on the phytosanitary certificate. Do not put the lot number in block 12 of the phytosanitary certificate.
- Supporting documents should be available upon request (documents such as field maps, Federal-State inspection certificates, spout inhibitor treatment records, North American Certified Seed Potato Health Certificate, etc.)

SUBSIDIARY INFO –

Phyto inspections must take place no more than 30 days prior to shipping.

DATE – 07/11/13

COUNTRY-MEXICO

SUMMARY REFERENCE – Same

APPROVED NAME – Mexico

COMMODITY – Roses

BOTANICAL NAME – *Rosa spp.*

PRODUCT FORM – Nursery Stock, Plants, & Cuttings

PHYTO FORM – Fed

IMPORT PERMIT – No – Plants, Cuttings,
& Budwood
Yes – All other Plant Parts

RESTRICTIONS – Restricted –
Plants, Cuttings, & Budwood
Prohibited – All other Plant Parts

SENASICA cancelled the previous import permit procedure for importing plant and plant products into Mexico and developed a new one. Instead of the previous procedure they have developed a data base in the SENASICA web page (www.senasica.gob.mx)

SUMMARY INFO – (From CA & OR) –

CUTTINGS, SEEDLINGS –

Federal Phytosanitary Certificate required. The plant material must come from a production unit that has a current annual certification provided by USDA as free of *Phytophthora ramorum*.

- Products must be shipped in closed containers and sealed at the origin by the official authority issuing the phytosanitary certificate. The seal should be broken at the point of entry into Mexico.
- Propagative materials require preventative treatment in country of origin or at point of entry into Mexico. If treated at origin, treatment must be listed in the treatment section of the PC.
- All propagative material must be free from soil and shipped in new packing material.

AD Required: “The shipment is free from *Prunus* necrotic ringspot virus, rose wilt disease, rose “X” virus, *Bemisia argentifolii*, *Cacoecimorpha pronubana*, and *Cydia prunivora*. Based on inspection, this shipment is free of *Maconellicoccus hirsutus*. The product has been inspected and found free of any biologic instars of *Epiphyas postvittana*. The plant material in this consignment has been produced in a production unit and inspected to be certified free of *Phytophthora ramorum*.”

NOTE: If inert substrate is used to support the plants, the material must not have been previously used and must be free from pests. If this is the case, the following AD is also required:

“The inert substrate used to support the plants is being used for the first time and is free from pests.”

SEE NEXT PAGE

GROWING MEDIA – (PACKING MATERIAL)

Articles capable of propagation may be packed in vermiculite, perlite, or any inert packing material. Organic material such as peat moss must be prior to shipment. Record the details of the treatment in the appropriate section of the Phyto.

INERT SUBSTRATE –

Organic or inorganic material that has been subjected to a quarantine treatment, acting as a support for plants, and is free of pests (for example: vermiculite, agrolita, peat moss, tezontle, washed sand, etc.). If using an inert substrate make sure to use AD regarding inert substrate as well.

PLANTS –

Import Permit and Federal Phytosanitary Certificate required. **DO NOT CERTIFY UNLESS AN IMPORT PERMIT IS PRESENTED.** The import permit will specify any additional requirements and treatment(s).

ADDITIONAL INFORMATION FOR PHYTO:

- If treatment is required PC treatment area must be filled out
- Include the scientific name of all commodities in Block 10 of the PC.
- Name of produce and quantity declared (Box 9) include the total weight of the shipment in pounds or kilograms to avoid any rejections at the border.

SUBSIDIARY INFO -

Phyto inspections must take place no more than 30 days prior to shipping. Phytos must not contain erasures, corrections, or no more than one type of handwriting. Botanical name must be written on the phyto in the appropriate area. *If the shipment does not originate in Kern county please call the office to verify AD is correct*